



2022

Oak Orchard Yacht Club

Sailing Instructions

1. RULES

- 1.1 The 2021 - 2024 ISAF Racing Rules of Sailing, the US Sailing Prescriptions, and these Sailing Instructions will govern all races.
- 1.2 All boats shall keep a paper or digital copy of the current Rules of Sailing and a paper or digital copy of these Sailing Instructions on board during all OOYC sponsored races.
- 1.3 Appendix T (Arbitration) will apply (SI 17.4).
- 1.4 The class rules of PHRF-LO shall apply.

2. ENTRIES

- 2.1 Members of Oak Orchard Yacht Club will be eligible to enter a boat in any club race. Boats from outside OOYC may enter with prior approval of the Fleet Captain or his delegate on a race-by-race or seasonal basis. A race fee shall be paid by each participating boat for the 2022 season.
- 2.2 Each competitor shall have a valid PHRF-LO rating certificate for their races to be scored. Boats without certificates may enter races with prior approval of the Fleet Captain or his delegate on a race-by-race or seasonal basis.

3. NOTICE TO COMPETITORS

- 3.1 Notices to competitors will be posted online at the racing page located on the OOYC website - www.ooyc.org. or emailed to racers.

4. CHANGES TO THE SAILING INSTRUCTIONS

- 4.1 Any changes to the Sailing Instructions will be posted before 0900 on the day it will take effect, except that any change to the schedule of races will be posted by 2000 on the day before it takes effect.



5. SIGNALS MADE ASHORE

5.1 No signals will be made ashore.

6. SCHEDULE OF RACES

6.1 The schedule of races is listed in Appendix B.

7. RACING AREA

7.1 The starting line will be approximately .2 nm WNW from the Oak Orchard Harbor entrance.

8. THE COURSES

8.1 The course charts are shown in Appendix A.

8.2 Description of Courses (ALL Buoys to PORT):

A - ALPHA Course - W/L course - start line pin (S/F) serves as leeward mark, different weather marks and leg lengths for Genoa Only (GW) and Spinnaker (SW) Fleets.

B - BRAVO Course - W/L course - leeward mark (L) is positioned to leeward of the start line, different weather marks and leg lengths for Genoa Only and Spinnaker Fleets.

C - CHARLIE Course - W/L course - start line pin (S/F) serves as leeward mark, Genoa Only and Spinnaker Fleets use the same weather mark (W).

8.3 Designating course - The RC will display a course board with the following: course letter, number of laps. Additionally, the RC may display the compass heading and distance to the first mark on the course board. The RC may, but are not required to, also announce the course via VHF channel 68.

9. MARKS

9.1 Marks will be inflatable buoy balls and cylinders based on conditions and equipment available.

9.2 Weather marks - when Spinnaker and GO Fleets are using separate weather marks, the Spinnaker Fleet will sail to an orange mark and the GO Fleet will sail to a yellow mark.

10. THE START

10.1 The starting line will be between a staff displaying a flag on the signal boat at the starboard end and an inflatable mark at the port end.

10.2 Boats that have yet to have their warning signal shall keep clear of the starting area and of boats in their sequence

10.3 OCS - The Race Committee (RC) will display an "X" flag and make a sound signal if a boat or boats are on course side at a start. The "X" flag will be



displayed until all premature starters have returned to the start side of the line to restart.

- 10.4 The RC will attempt to announce, by VHF radio, sail numbers or boat names observed to be OCS at the starting signal. Failure of the race committee to make such announcements, or of a boat to hear it, and the timing or sequence of such announcements will not be grounds for protest or a request for redress. This changes RRS 62.1(a).
- 10.5 Visual Signals - The RC will not be required to use visual signals in addition to sound signals. The RC will announce a description of each sound signal via VHF radio. Failure to do so will not be grounds for protest or redress.
- 10.6 Start Sequence - The RC will use the following start sequence:
(Times of day are targets. Scheduled starting times will change for the last two races in accordance with the schedule in Appendix B.)
- 10.7 Combined Start - A combined GO and Spinnaker start for Thursday night racing can only happen with a posted amendment to these sailing instructions.

Time of Day	Start Sequence Timing	Description	Sound Signal
1834	6 minutes	Courtesy Attention	Series of Horn Blasts
1835	5 Minutes to GO Start	Warning	Horn
1836	4 Minutes to GO Start	Prep	Horn
1837			
1838			
1839	1 Minute to GO Start	1 Minute	Horn
1840	GO Start / 5 Min to Spinnaker	Start/Warning	Long Horn
1841	4 minutes to Spinnaker Start	Prep	Horn
1842			
1843			
1844	1 Minute to Spinnaker Start	1 Minute	Horn
1845	Spinnaker Start	Start	Long Horn



11. CHANGE OF COURSE

- 11.1 Due to the absence of a mark-set boat, no change of course will be possible for OOYC Thursday night races. Races can be shortened.

12. SHORTENING COURSE

- 12.1 The RC may shorten course at their discretion.
12.2 Courses can only be shortened to turning marks of the course.
12.3 If shortening course, the RC will display the “S” flag and make repeated sound signals.
12.4 The RC may announce shortening of course via VHF. The lack of an announcement via VHF will not be grounds for protest or redress.

13. THE FINISH

- 13.1 The finishing line will be between a staff displaying a flag on the signal boat and a nearby inflatable mark.
13.2. All boats shall take their time at the finish line for verification of general position.

14. TIME LIMITS AND TARGET TIMES

- 14.1. Each boat's time limit will be 2 hours corrected. To determine your boat's individual time limit: Convert 2 hours to 120 minutes. Divide 120 by your PHRF T/T multiplier and then convert back into hours and minutes.
14.2 If no boat reaches the first mark within 1 hour, the race shall be abandoned.
14.3 Boats failing to finish within the Finishing Window shall be scored Did Not Finish (DNF) without a hearing. This changes RRS 35, A4 and A5.
14.4 The Race Committee may abandon a race at any time when they deem that the conditions are either no longer creating a fair contest, or they believe that boats will not achieve limit times. The RC's decision to abandon is not subject to protest or redress.

15. SCORING

- 15.1 Individual Races will be corrected using PHRF-LO Time-on-Time handicapping
15.2 Low Point Scoring will be used - 1st - 1 pt, 2nd - 2 pts, 3rd - 3 pts, etc.
15.3 DSQ and DNF will be scored one more than the number of starters for a race. These scores can be used for season scoring if necessary.
15.4 DNS scores may not be counted toward season or overall scores.



15.5 Drop races - Boats will be allowed to drop their worst scores from their season series scores and overall scores based on this chart:

Number of Races	Races Counted
12	9
11	8
10	7
9	7
8	6
7	5
6	4
5	3
4	3
3	2
2	2
1	1

16. RADIO COMMUNICATION

16.1 All VHF radio communication will be conducted on Channel 68

16.2 All boats are required to carry VHF radios capable of receiving and transmitting calls.

16.3 Permitted radio communication - Competitors may hail the RC for the following reasons: clarification regarding course to be sailed, missing or drifting mark(s), collision between boats, lodging a protest, withdrawing from a race, boat or crew in peril. Failure of the RC to respond to radio calls will not be grounds for protest or redress.

16.4 Restricted radio communication - Competitors will remember that the RC is made up of volunteers and shall not hail the RC for the following reasons: suggestions regarding procedure or course, negative criticism, or voicing displeasure. The RC, the Fleet Captain, or competitors are permitted to lodge a protest citing Rule 69.1 and a competitor will be subject to possible disqualification from the race.

17 PROTESTS, ARBITRATION, & HEARINGS

17.1 Except as provided otherwise in the RRS/US, a boat intending to protest because of an incident occurring in the racing area of which she is aware



shall hail the other boat of her intention to protest specifically using the word, "PROTEST", and conspicuously display a red flag at the first reasonable opportunity for doing each. In all cases she shall inform the other boat as soon as reasonably possible.

17.2 A boat intending to protest or request redress based on an incident in the racing area that she is involved in or sees shall, at the first reasonable opportunity after she finishes, inform the race committee at the finishing line of her intent to protest or request redress and, when applicable, the identity of the protested party. A boat performing an alternative penalty under RRS/US 44 shall inform the Race Committee of her action immediately after finishing.

17.3 The Fleet Captain or his delegate shall reject any protest that does not strictly adhere to the procedures in OOYC SI 17.1 and 17.2.

17.4 Arbitration - All protests will first go through the arbitration process. The arbitrator in the arbitration process is the Fleet Captain, or his chosen delegate.

17.4.1 Post-Race Penalty - At any time after a race and prior to the protest hearing, protested boats may deliver a written statement to the arbitrator that they have chosen to accept a 30% scoring penalty to exonerate themselves. This option excludes all collisions that cause damage.

17.4.2 Arbitration Meeting - The arbitrator will first determine if arbitration is appropriate. If not, the protest will go directly to a protest hearing. In Arbitration each boat will have a single representative who was present at the time of incident. No witnesses will be allowed. The arbitrator will offer an opinion of what the protest committee is likely to find. These will include one of the following: protest is invalid, no boat will be penalized, one or more boats will be penalized for breaking a rule.

17.4.3 Arbitration Meeting Outcomes - One of the three following outcomes will result from the arbitration meeting - a 30% scoring penalty is accepted, a protest is withdrawn, or neither of the first two options thus resulting in a protest hearing.

17.5 Protest Hearings - All valid protests that are not resolved in the arbitration process will have a scheduled protest hearing. A protest committee will be a group of delegates chosen by the Fleet Captain and agreed to by the parties to the protest.

18. PRIZES

18.1 Prizes will be awarded to the top three boats in each division for the Spring and Summer Series. Additionally, prizes will be awarded in each fleet for the Overall Thursday Championship.



19. DISCLAIMER OF LIABILITY

19.1 Competitors participate in Oak Orchard Yacht Club races entirely at their own risk. The organizing authority will not accept any liability for material damage or personal injury or death sustained in conjunction with or prior to, during, or after club races

20. INSURANCE

20.1 Each participating boat shall be insured with valid third-party liability insurance with a minimum coverage of \$300,000 per incident.

APPENDIX A – RACE COURSES

- ALL Buoys left to PORT - ALL Courses



A - ALPHA - W/L Course (separate GO & SP weather marks)

A1 - Start - SW/GW - Finish

A2** - Start - SW/GW - S/F -
SW/GW -Finish

B - BRAVO - W/L (Leeward Mark below S/F Line)

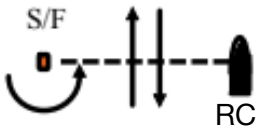
B1 - Start - SW/GW - L - Finish

B2* - Start - SW/GW - L - *START
LINE GATE* - SW/GW - L - Finish

C - CHARLIE - W/L (Simple W/L 2 Marks Only)

C1 - Start - W - Finish

C2** - Start - W - S/F - W - Finish



***B2 Course** - **Start/Finish line must be treated as a gate on the second upwind leg.** Therefore, all boats must sail through the Start/Finish line. This allows for the possibility of shortening course by the RC at that point - if deemed necessary.



Course not shown to scale.

SW - Spinnaker Weather Mark

GW - Genoa Only weather Mark

W - Shared Weather Mark

S/F- Start/Finish Pin

L - Leeward Mark

** A2 & C2 Courses - Shortening of course protocol: If shortening at the S/F mark the mark **must be left to port.** The RC boat may attempt to move to create a finish line leaving the buoy to port. If they fail to do so it is not subject to protest or redress. **If the RC boat does not move, boats must round the mark to port and will receive their finish horn when their bow breaks the plane between the mark and line flag heading back toward the weather mark.**



APPENDIX B - 2022 SCHEDULE

June 16	Thursday	Spring #1	6:35/6:40 Start
June 18	Saturday	Summer Sailstice	12:00
June 23	Thursday	Spring #2	6:35/6:40 Start
June 30	Thursday	Spring #3	6:35/6:40 Start
July 7	Thursday	Spring #4	6:35/6:40 Start
July 14	Thursday	Spring #5	6:35/6:40 Start
July 21	Thursday	Spring #6	6:35/6:40 Start
July 23	Saturday	Henri Cup Race	9:00 Skippers Mtg
July 28	Thursday	Summer #1	6:35/6:40 Start
August 4	Thursday	Summer #2	6:35/6:40 Start
August 11	Thursday	Summer #3	6:35/6:40 Start
August 18	Thursday	Summer #4	6:35/6:40 Start
August 25	Thursday	Summer #5	6:25/6:30 Start
September 1	Thursday	Summer #6	6:20/6:25 Start
September 3	Saturday	Ketchup Race	9:00 Skippers Mtg
September 2	Thursday	Make up	6:35/6:40 Start
September 25	Sunday	Sailing Banquet	2:00

